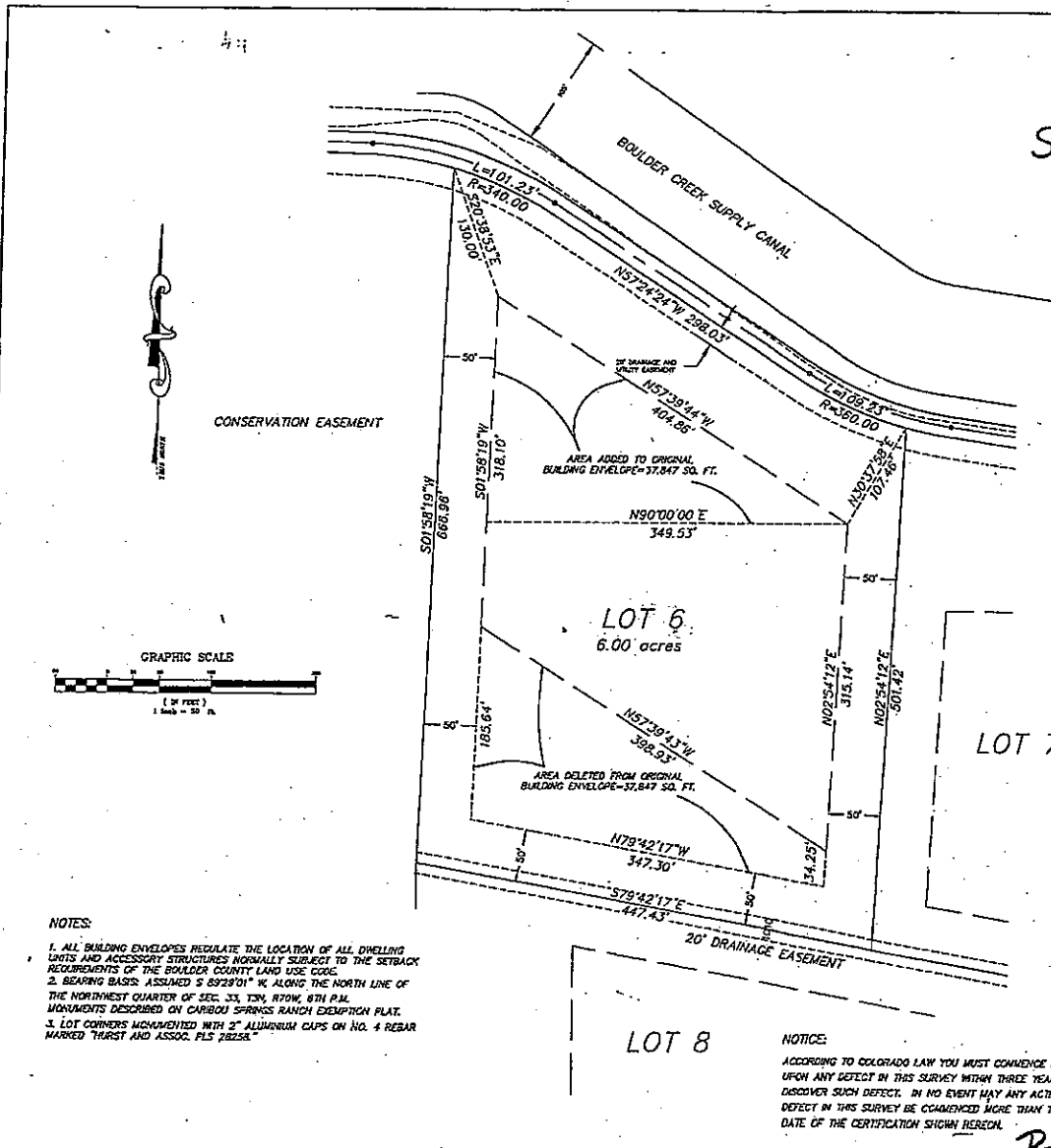


2005365.001 ✓

R494-18

CARIBOU SPRINGS RANCH SUBDIVISION EXEMPTION PLAT AMENDMENT



CONSERVATION EASEMENT



NOTES:

1. ALL BUILDING ENVELOPES REGULATE THE LOCATION OF ALL DWELLING UNITS AND ACCESSORY STRUCTURES NORMALLY SUBJECT TO THE SETBACK REQUIREMENTS OF THE BOULDER COUNTY LAND USE CODE.
2. BEARING BASIS: ASSUMED S 89°29'01\" W/4 ALONG THE NORTH LINE OF THE NORTHWEST QUARTER OF SEC. 33, T34, R70W, 8TH P.M. MONUMENTS DESCRIBED ON CARIBOU SPRINGS RANCH EXEMPTION PLAT.
3. LOT CORNERS MONUMENTED WITH 2\" ALUMINUM CAPS ON NO. 4 REBAR MARKED \"HURST AND ASSOC. PLS 28258\"

LOT 8

NOTICE:

ACCORDING TO COLORADO LAW YOU MUST COMMENCE ANY LEGAL ACTION BASED UPON ANY DEFECT IN THIS SURVEY WITHIN THREE YEARS AFTER YOU FIRST DISCOVER SUCH DEFECT. IN NO EVENT MAY ANY ACTION BASED UPON ANY DEFECT IN THIS SURVEY BE COMMENCED MORE THAN TEN YEARS FROM THE DATE OF THE CERTIFICATION SHOWN HEREON.

LEGAL DESCRIPTION

LOT 6, CARIBOU SPRINGS RANCH EXEMPTION PLAT AS RECORDED AT REC. NO. 1748590 AND IN P-42, F-1, 13-8. BOULDER COUNTY, COLORADO

SURVEYOR'S CERTIFICATE

I, JOHN C. BARICKMAN, A LICENSED PROFESSIONAL LAND SURVEYOR IN THE STATE OF COLORADO, DO HEREBY CERTIFY THAT THIS MAP ACCURATELY AND CORRECTLY REPRESENTS THE RESULTS OF A SURVEY DONE UNDER MY SUPERVISION.

John C. Barickman
 JOHN C. BARICKMAN
 COLORADO PLS 28258
 FOR AND ON BEHALF OF HURST AND ASSOCIATES, INC.

CLERK AND RECORDER'S CERTIFICATE

STATE OF COLORADO)
 COUNTY OF BOULDER)

I HEREBY CERTIFY THAT THIS INSTRUMENT WAS FILED IN MY OFFICE AT 3:25 PM ON 09/09/2005 IN THE DAY OF December, 1999 AND IS DULY RECORDED IN PLAN FILE # 2005-365. FEES \$ 10.00. PAID.

Charlotte Houston
 CLERK AND RECORDER
 COUNTY OF BOULDER
 STATE OF COLORADO
 BY *Matthew Staveland*
 DEPUTY

BOARD OF COMMISSIONER'S APPROVAL

APPROVED THIS 9 DAY OF December, 1999. BOARD OF COMMISSIONERS, BOULDER COUNTY, COLORADO.

Russell Staveland
 CHAIR

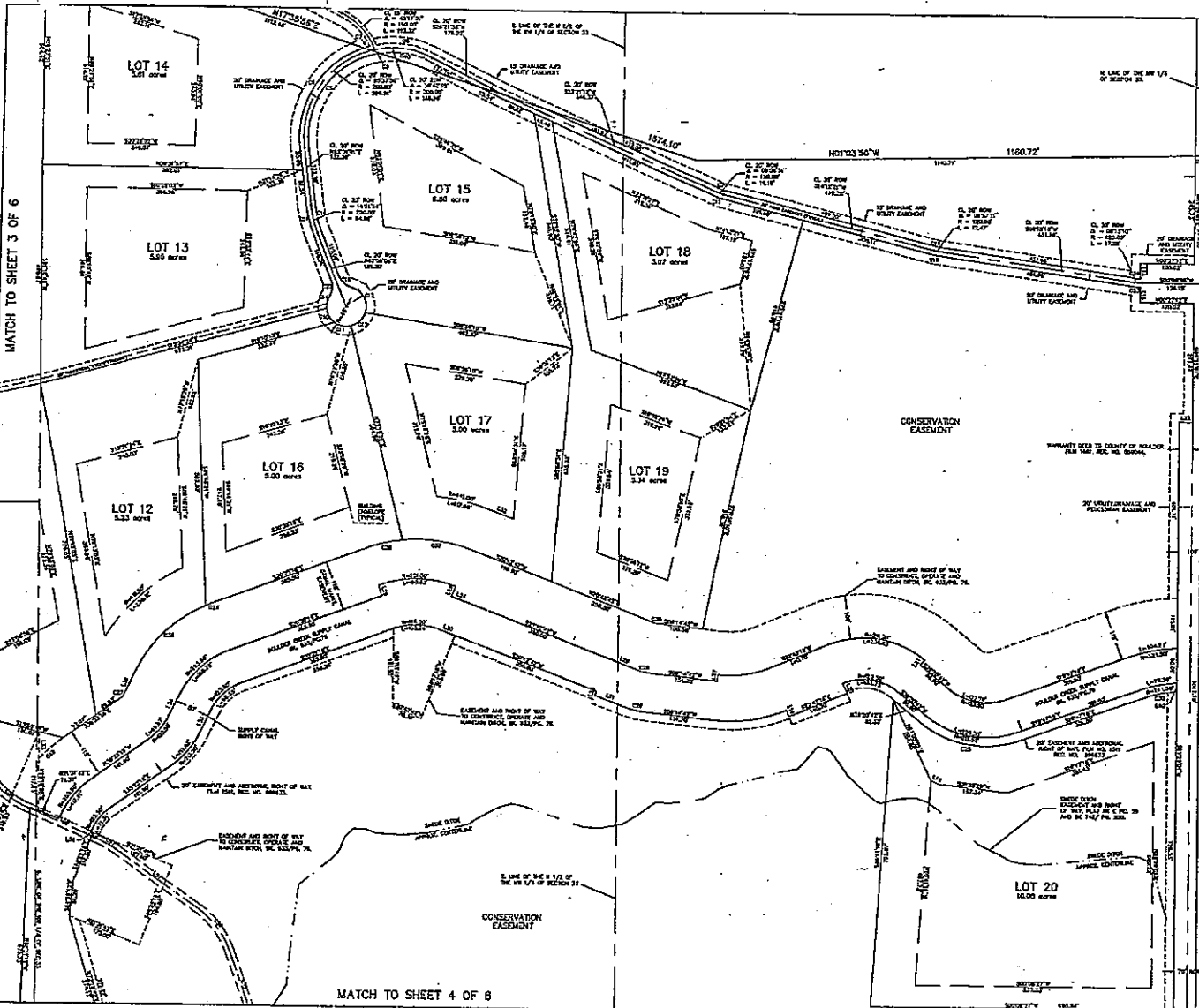
ATTEST: *Matthew Staveland*
 Deputy CLERK OF BOARD

SUBDIVISION EXEMPTION AMENDMENT
 LOT 6 CARIBOU SPRINGS RANCH

SCALE: 1"=50'
 HURST & ASSOCIATES, INC.
 REGISTERED ENGINEERS
 1000 14th St. N.E.
 Grand Rapids, MI 49503-3000
 TEL: 616-941-1000 FAX: 616-941-1001

P-49 F-4 #18

SKLD LG 172.20.6.95 BD 1748590-1997.002



SHEET 2 OF 6

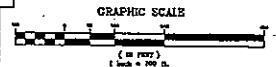


LINE TABLE

LINE NO.	DESCRIPTION	LENGTH	AREA
1
2
3
4
5
6
7
8
9
10
11
12
13
14
15
16
17
18
19
20
21
22
23
24
25
26
27
28
29
30
31
32
33
34
35
36
37
38
39
40
41
42
43
44
45
46
47
48
49
50

CURVE TABLE

LINE NO.	START STATION	END STATION	LENGTH	AREA
1
2
3
4
5
6
7
8
9
10
11
12
13
14
15
16
17
18
19
20
21
22
23
24
25
26
27
28
29
30
31
32
33
34
35
36
37
38
39
40
41
42
43
44
45
46
47
48
49
50



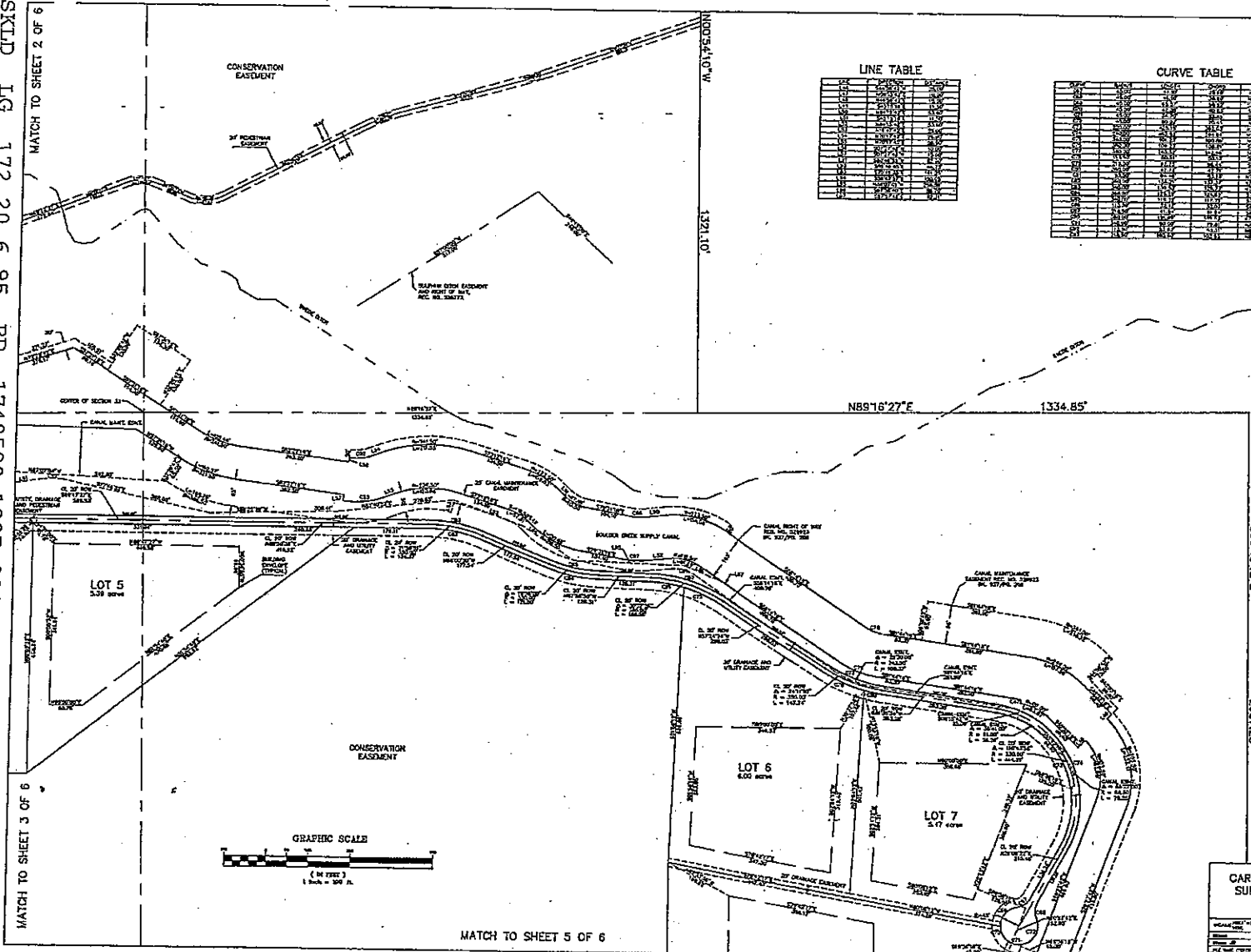
CARBON SPRINGS RANCH
SUBDIVISION EXEMPTION
PLAT

PREPARED BY
MURPHY & ASSOCIATES, INC.
ENGINEERING PROFESSIONALS
DATE: 08/14/97
SCALE: AS SHOWN ON THIS PLAT
DRAWN BY: [Name]
CHECKED BY: [Name]

MATCH TO SHEET 4 OF 6

P-42 F-1 #4 (2 of 6)

SKLD LG 172.20.6.95 BD 1748590-1997.004

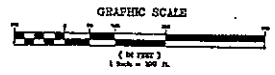


LINE TABLE


LINE NO.	BEARING	DISTANCE	AREA
1	N 89° 16' 27" E	1334.85'	
2	S 50° 43' 12" E	2957.23'	
3	S 89° 16' 27" W	1334.85'	
4	N 50° 43' 12" W	2957.23'	
5	N 89° 16' 27" E	1334.85'	
6	S 50° 43' 12" E	2957.23'	
7	S 89° 16' 27" W	1334.85'	
8	N 50° 43' 12" W	2957.23'	
9	N 89° 16' 27" E	1334.85'	
10	S 50° 43' 12" E	2957.23'	
11	S 89° 16' 27" W	1334.85'	
12	N 50° 43' 12" W	2957.23'	
13	N 89° 16' 27" E	1334.85'	
14	S 50° 43' 12" E	2957.23'	
15	S 89° 16' 27" W	1334.85'	
16	N 50° 43' 12" W	2957.23'	
17	N 89° 16' 27" E	1334.85'	
18	S 50° 43' 12" E	2957.23'	
19	S 89° 16' 27" W	1334.85'	
20	N 50° 43' 12" W	2957.23'	

CURVE TABLE

LINE NO.	BEARING	DISTANCE	AREA
1	N 89° 16' 27" E	1334.85'	
2	S 50° 43' 12" E	2957.23'	
3	S 89° 16' 27" W	1334.85'	
4	N 50° 43' 12" W	2957.23'	
5	N 89° 16' 27" E	1334.85'	
6	S 50° 43' 12" E	2957.23'	
7	S 89° 16' 27" W	1334.85'	
8	N 50° 43' 12" W	2957.23'	
9	N 89° 16' 27" E	1334.85'	
10	S 50° 43' 12" E	2957.23'	
11	S 89° 16' 27" W	1334.85'	
12	N 50° 43' 12" W	2957.23'	
13	N 89° 16' 27" E	1334.85'	
14	S 50° 43' 12" E	2957.23'	
15	S 89° 16' 27" W	1334.85'	
16	N 50° 43' 12" W	2957.23'	
17	N 89° 16' 27" E	1334.85'	
18	S 50° 43' 12" E	2957.23'	
19	S 89° 16' 27" W	1334.85'	
20	N 50° 43' 12" W	2957.23'	



CARIBOU SPRINGS RANCH
 SUBDIVISION EXEMPTION
 PLAT

MEASURED AND PLATTED BY
 HURST & ASSOCIATES, INC.
 PROFESSIONAL ENGINEERS
 200 W. 10th St. S.W.
 OKLAHOMA CITY, OKLAHOMA 73101

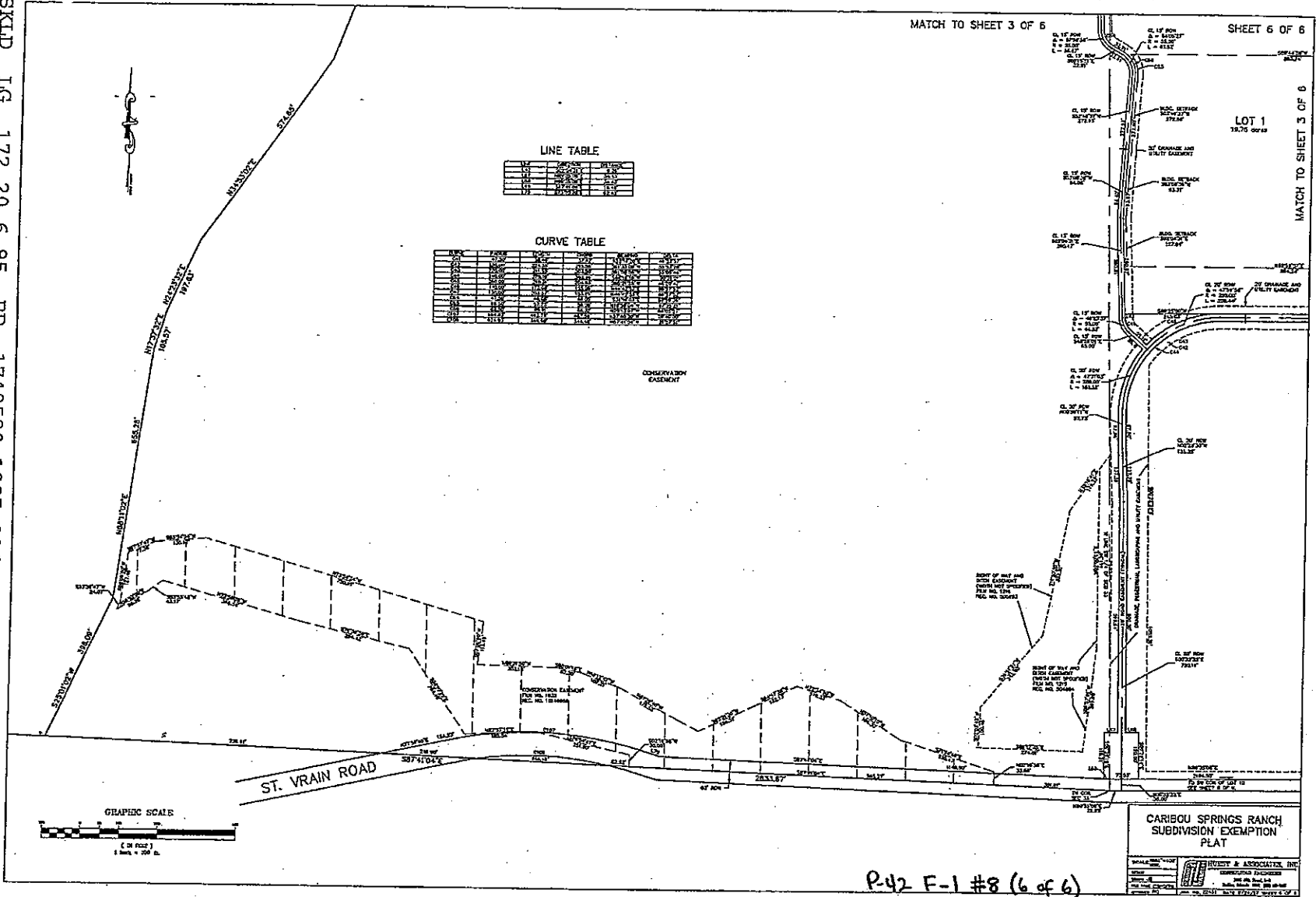
P-42 F-1 #6 (4 of 6)

MATCH TO SHEET 2 OF 6

MATCH TO SHEET 3 OF 6

MATCH TO SHEET 5 OF 6

SKLD LG 172.20.6.95 BD 1748590-1997.006

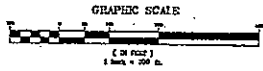


LINE TABLE

LINE NO.	DESCRIPTION	BEARING	DISTANCE
1
2
3
4
5
6
7
8
9
10
11
12

CURVE TABLE

LINE NO.	START STATION	END STATION	CHORD BEARING	CHORD DISTANCE	ARC DISTANCE	ANGLE
1
2
3
4
5
6
7
8
9
10
11
12



CARIBOU SPRINGS RANCH
SUBDIVISION EXEMPTION
PLAT

PREPARED BY: [Signature]
DATE: [Date]

ENGINEER & ARCHITECT, INC.
CONSULTING ENGINEERS
1000 W. 10th St., Suite 200
DENVER, CO 80202

P-42 F-1 #8 (6 of 6)